

# HIGH-PRESSURE RELIEF VALVES

H-900HP SERIES



## FEATURES

- St.St. 316 Construction
- MAWT up to 6000 psi
- Set Pressure from 50 psig to 6000 psig ( 3.50 to 414 bar)
- Identifying colored springs for each pressure range
- Replaceable springs for variable pressure ranges
- Available in all pipe threads and LET-LOK® connections
- Option to comply with standards CE/PED
- Sizes range: 1/4", 1/2", 6mm and 12mm

## GENERAL

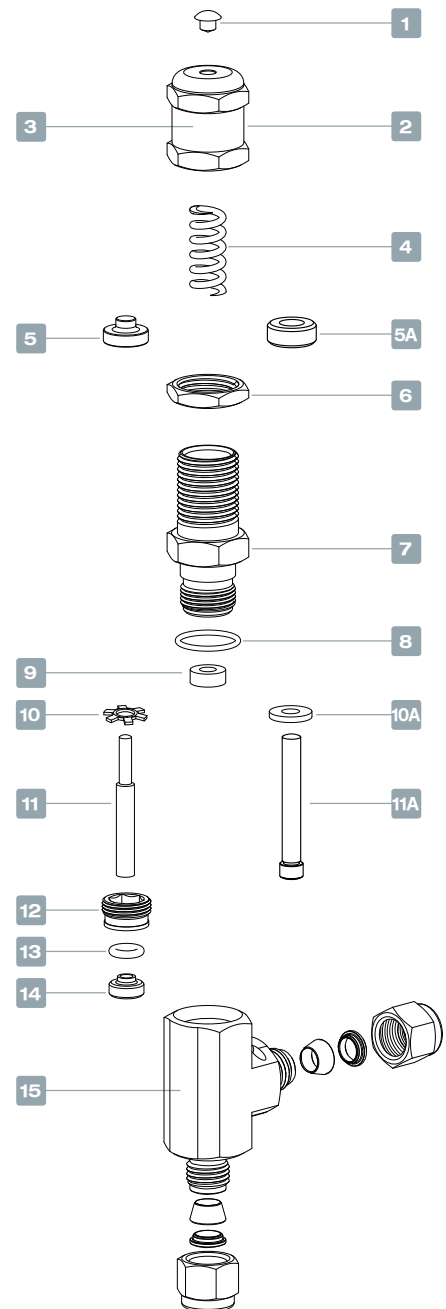
The H-900 HP Series is a relief valve designed for high pressure services. It is most suited for use where changes in pressure can cause process issues, system damage or personal injury.

### MATERIALS OF CONSTRUCTION

Item No.	Components	Qty.	1/4" Body Size	1/2" Body Size
1	Cap Plug	1	Polypropylene	Polypropylene
2	Label	1	Polyester	Polyester
3	Adjustment Cap	1	St.St 316	St.St 316
4	Spring	1	St.St. 302,17-7PH	St.St. 302,17-7PH
5	Lower Spring Button	1	St.St 316	-
5A	Lower Spring Button	1	-	St.St 316
6	Locking Nut	1	St.St 316	St.St 316
7	Bonnet	1	St.St 316	St.St 316
8	O-Ring	1	Fluorocarbon FKM	Fluorocarbon FKM
9	Quad Ring	1	Fluorocarbon FKM	Fluorocarbon FKM
10	Retaining Ring	1	PH15-7 Mo	-
10A	Location Ring	1	-	St.St 316
11	Stem	1	St.St 316	-
11A	Stem	1	-	St.St. 316 bonded with Fluorocarbon FKM
12	Clamps Screw	1	St.St 316	-
13	O-Ring	1	Fluorocarbon FKM	-
14	Insert	1	St.St 316	-
15	Body	1	St.St 316	St.St 316

### PRESSURE TEMPERATURE RATING

Series	H-900HP Body Size: 1/4" & 1/2"				
	Seal Material	Fluorocarbon FKM	Buna N	Polychloroprene (CR)	EPDM
TEMP °C (°F)	MAX SET PRESSURE psig (bar)				
-40 (-40)					
-34 (-30)					
-23 (-10)					
-18 (0)					
-12 (10)					
-4 (25)					
-1 (30)					
10 (50)					
65 (150)	6000 (413)	6000 (413)	6000 (413)	6000 (413)	6000 (413)
93 (200)	5200 (358)	5200 (358)	5200 (358)	5200 (358)	5200 (358)
121 (250)	4900 (338)	4900 (338)	4900 (338)	4900 (338)	4900 (338)
135 (275)					
148 (300)			4700 (324)		





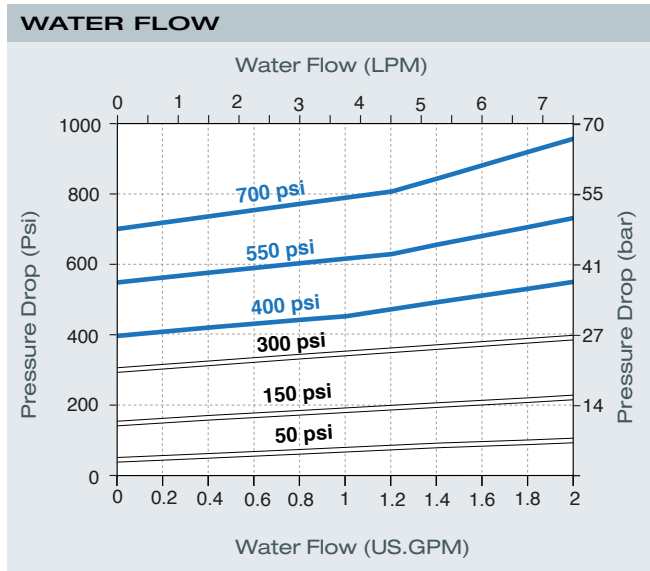
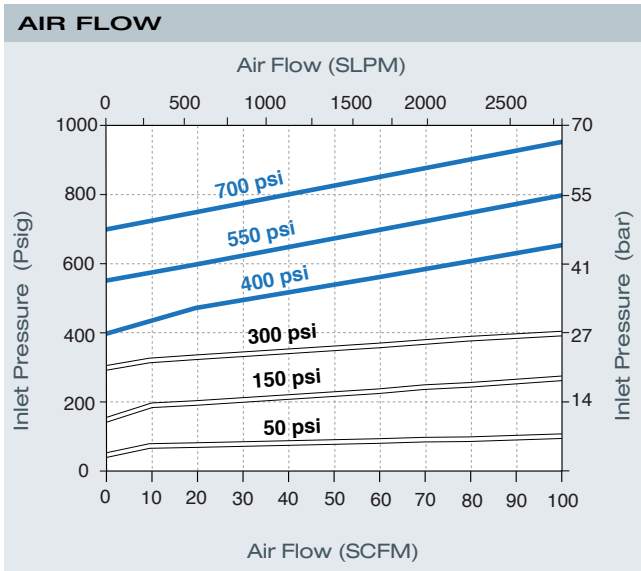
**FLOW DATA AT 70°F (20°C) FOR 1/4" BODY SIZE**



**A**  
**SPRING 50-350psig**



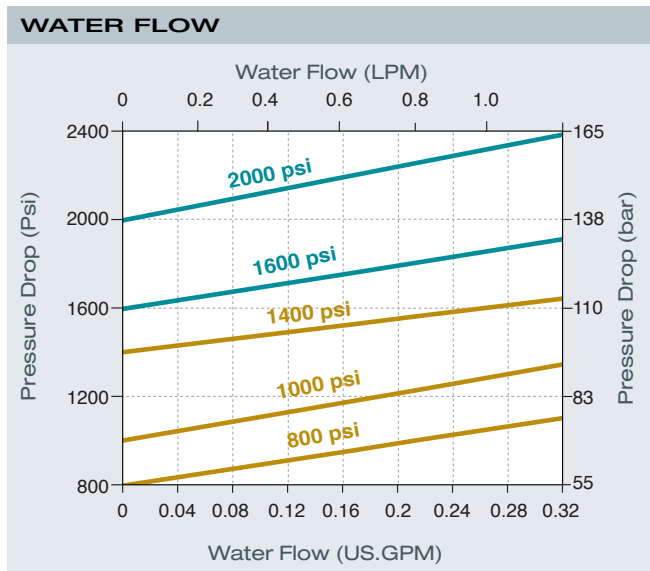
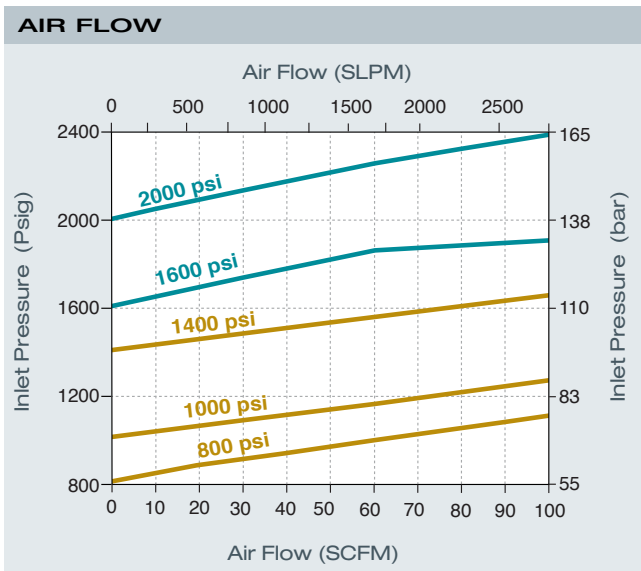
**B**  
**SPRING 350-750psig**



**C**  
**SPRING 750-1500psig**



**D**  
**SPRING 1500-2250psig**



**FLOW DATA AT 70°F (20°C) FOR 1/4" BODY SIZE**



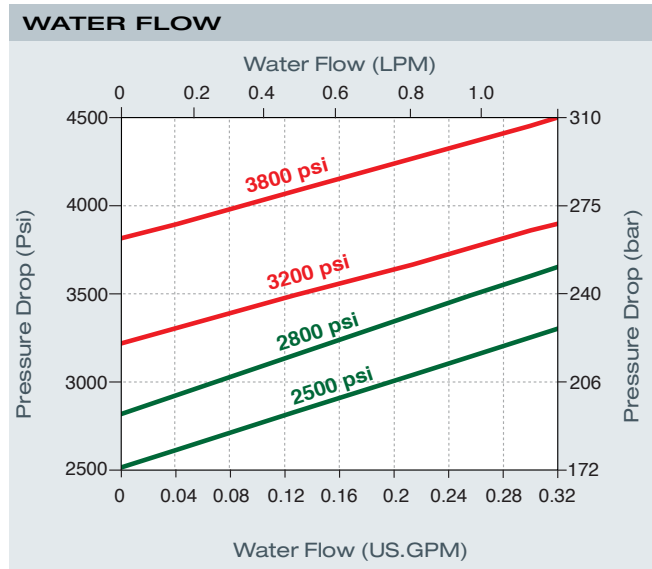
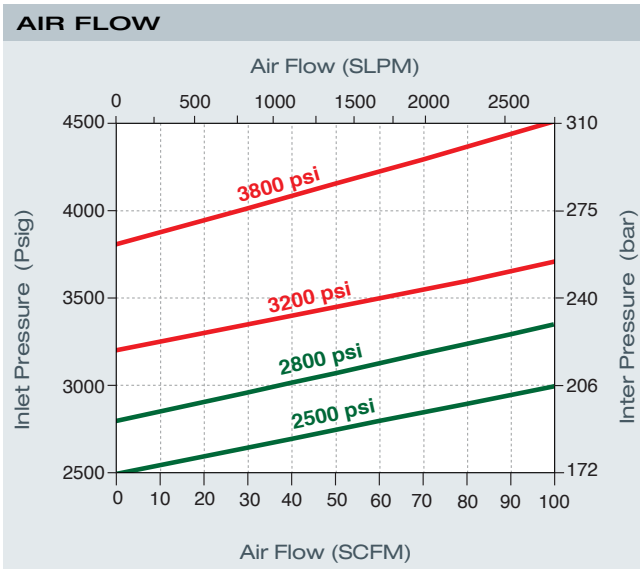
**E**

**SPRING 2250-3000psig**



**F**

**SPRING 3000-4000psig**



**G**

**SPRING 4000-5000psig**



**H**

**SPRING 5000-6000psig**

